

JANUARY 2020



ACTION FOR THE NEEDY IN ETHIOPIA

Eight Years of Humanitarian Services in Ethiopia



**REACHING
AND SERVING
THE MOST VULNERABLE**





Board of Directors



H. E. Ambassador Asfaw Dingamo
Plenipotentiary Ambassador of the FDRE in Cuba
Chairman, ANE Board of Directors



H.E Elema Kamphe
General Auditor in Oromia Regional State
Vice Chairman, ANE Board of Directors



H.E Mrs. Fozia Amin
State Minister, FDRE Attorney General
Member, ANE Board of Directors



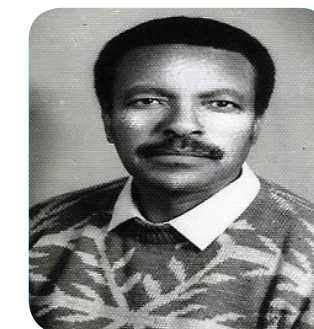
Dr. Taye Tolera
Team Leader, Health Program Mckinsey & Company
Member, ANE Board of Directors



Dr. Maru Gama
Associate Professor, Academic staff and Researcher in St. Paulos Hospital
Member, ANE Board of Directors



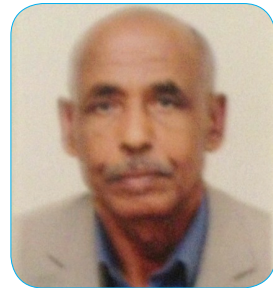
Mr. Huka Dida
Head of Agriculture Department of Guji Zone Oromia.
Member, ANE Board of Directors



Mr. Seyum Woldemeskel
Member, ANE Board of Directors



Mr. Salihu Sultan
ANE Managing Director



Ato Tena Mengistu
Former ERCS Secretary General
Technical Advisor (Voluntary Base)



Mr. Feysel Takele
Admin & Finance Department Head



Mr. Ayano Someno
Program Department Head



Nejat Ahmed
Finance Grant Controller



Asrat Negeri
WASH Coordinator



Ferehiwot Tesfaye
Finance Coordinator



Mr. Fantahun Shiferaw
Senior Human Resources and
Liaison Officer



Mr. Yohannes Admasu
Public Relation Officer



Mr. Nuru Abdulwali
Senior IT Officer



Alemayehu Mesele
Mega, West Guji & Gedo
Zonal Branch Coordinator



Ermias Nesiro
Gambella Branch
Coordinator



Hussien Awol
Melkadida Branch
Coordinator



Yonas Meseret
Assosa Branch
Coordinator



Table Of Content

<i>Message by the Board Chairman</i>	4
<i>Message by the Managing Director</i>	5
<i>About Us</i>	6
<i>Partnership and Coordination</i>	12
<i>ANE Rolling Strategic Plan (2019- 2021)</i>	10
<i>Key Sector Based Humanitarian Service Achievements (2012-2019)</i>	12
<i>Eight Years Humanitarian Services Achievements by Sectors</i>	16
<i>Assistances for Other Affected Population</i>	48



H.E. Ambassador Asfaw Dengamo,
Plenipotentiary Ambassador of the FDRE in Cuba
Chairman, ANE Board of Directors

Today, despite multiple efforts made, there is still a need to exhibit extra commitments at all levels including at the level of individuals, organizations, associations, governments, UN Agencies and donors to continue the provision of optimal humanitarian assistance to improve the daily lives and livelihoods of the most vulnerable people including refugees, internally displaced persons (IDPs) and the victims of drought and other adverse factors in Ethiopia.

Although the progress made to date is quite notable and, at times, remarkable, the multi-faceted challenges facing the refugees and vulnerable host communities in Ethiopia still remain to be brought under control through collaborative efforts with broad-based engagement in humanitarian and development endeavors with more sustainable focus on provision of enough food, core relief items, water supply, infrastructure including

shelter and, access roads, health services, access to education, access to hygiene and sanitation services, and relevant activities promoting livelihoods

Action for the Needy in Ethiopia (ANE), born out of the belief that civil societies can contribute significantly to the alleviation of human suffering in Ethiopia, has been doing its level best reaching out to the most needy and playing an important auxiliary role complementing the efforts of the Government and other stakeholders. As a result, the relentless effort to date has enabled ANE to reach and serve more than 1.5 million beneficiaries including refugees and most vulnerable communities including IDPs and populations affected by drought and other adverse factors. In partnership with multiple Ethiopian government organs as well as donors, ANE was able to provide humanitarian assistances under the thematic areas of provision of food and core relief items (CRIs),

health, water, sanitation and hygiene (WASH), infrastructures (shelter and access roads), education, livelihood support, environment protection, energy and psycho-social support for people with specific needs, responding to the humanitarian and development needs of refugees, drought affected host communities and internally displaced persons in Oromia, Gambella, Benishangul – Gumuz, Oromia, Somali, South Nation Nationalities and Peoples (SNNP), Tigray and Afar Regional States of Ethiopia.

To reach the desired stage, where the humanitarian and development needs of the diversity of beneficiaries are met in a way that ensures the basic standard of living that everyone deserves, represents nothing less than a huge ambition and a feat that can only be achieved through the sustained collective commitment by all concerned in including the government organizations, civil societies and national and international donors.

Based on its growing experiences with the rising scale of progress it has made to date with proven capacities to deliver, ANE is redoubling its efforts with greater commitment to doing more within the global framework of the comprehensive refugee response framework (CRRF) which encourages a process of more predictable and equitable responsibility sharing among the real and potential stakeholders. To facilitate the roll out and implementation at country level, the National Strategy of the Government in Ethiopia has been enriched with a view to focusing not only on emergency needs but also more importantly on durable solutions that can improve the lives and

livelihoods of the beneficiaries including refugees and vulnerable host communities.

As the CRRF also calls for a whole-of-society approach to ensure broad-based support from a wide range of stakeholders, ANE is working hard to consolidate and expand its institutional and operational capacities with increasing support being mobilized from international and national partners and supporters. The renewed focus on consolidation and expansion will, we believe, enable ANE to contribute more optimally supporting more and more beneficiaries and further demonstrating its capacity in the implementation of the CRRF as adopted within the National Strategy of the Ethiopian Government.

On behalf of ANE's Board of Directors, I would like to take this opportunity to express my deepest gratitude to the Government of Ethiopia, our national and international donors and partners UN Agencies, Embassies, Civil Societies, Private Sector Organizations and Individuals who have substantially supported us in the past eight years. I would also like to close with a note of greater optimism as I believe that, in view of the very massive humanitarian and development needs in the country, all the stakeholders will rise up to the challenge actively contributing to make a difference in the lives and livelihoods of the beneficiaries in line with global call through the CRRF and the broad-based country strategy adopted by the Ethiopian Government.

Thank you,



Mr. Salihu Sultan
 Managing Director,
 Action for the Needy in Ethiopia

At the virtue of concluding the 2019 budget year, we are substantially satisfied with our project activity performances supporting refugee, internally displaced people (IDP) and needy local communities throughout provision of basic services in Oromia, Gambella, Benishangul-Gumuz, Somali, South Nation Nationalities and Peoples (SNNP), Tigray and Afar Regional States, Ethiopia.

As a result, ANE continues to be considered as dependable locally established humanitarian organization ensuring a streamlined process of leadership and management striving to address basic needs of most affected people in Ethiopia.

Since July 2018, under Ethiopian Government Leadership, ANE has been engaging in humanitarian

assistance provision programs for an estimated of 800,000 vulnerable people displaced as result of renewed inter-communal violence erupted in Gedo Zone and West Guji Zone, of South Nation, Nationalities and People (SNNP) and Oromia Regional States, Ethiopia.

In the last Eight-Year Project Implementation Period (2012-2019), ANE, in partnership with multiple Ethiopian government organs as well as donors, was able to provide humanitarian assistances, under the thematic areas of Provision of Food and Core Relief Items (CRIs), Health, Water, Sanitation and Hygiene (WASH), Shelter and Infrastructures, Education, Livelihood, Emergency Services, Environment Protection and Psycho-Social Support for People with Specific Needs, so

as to meet the basic need of more than 1.5 Million refugees, drought affected host communities and internally displaced persons in Oromia, Gambella, Benishangul – Gumuz, Oromia, Somali, South Nation Nationalities and Peoples (SNNP), Tigray and Afar Regional States of Ethiopia.

Most importantly, I would like to praise ANE Bule Hora Field Office for its 2019 outstanding performance covering various humanitarian activities completed in support of IDP and Returnee IDPs in West Guji Zone, Oromia Regional State and Gedio Zone, SNNP Regional State . These include mainly the Shelter, Rehabilitation of Public Institutions under Quick Impact Project and WASH services supported by Ethiopian Government, UNHCR and IOM.

Over the 2020 project partnership agreements established, among the others, with Ethiopian Government Refugee Counterpart Administration for Refugee and Returnee Affairs (ARRA), Local Government Administrations, United Nations High Commission for Refugees (UNHCR), World

Food Program (WFP), International Organization for Migration (IOM) and other potential donors identified, ANE will continue providing numerous humanitarian supports so as to meet the best interest of refugees, IDP and most affected local communities.

Grateful we are for direct supports of our donors, to the combined roles of our organization's Patron, the General Assembly, constructive leadership by most experienced board members and executive management as well as effective works of more than 300 dedicated staff members and volunteers enable ANE to be considered as the strongest organization ensuring profound intervention to support the Ethiopian government efforts in the field of humanitarian and development programs.

I also count on the same level of commitment and efforts of all staff members to enhance our organization capacity for more protection of vulnerable people in 2020 and the years to follow.

Sincerely,



ABOUT US

ORIGIN AND EVOLUTION

Action for the Needy in Ethiopia (ANE) was established in 2012 and started its humanitarian operations subsequent to its registration was effected in the same year as locally established member of Civil Societies by Federal Democratic Republic of Ethiopia (FDRE), Charities and Societies Agency (CHSA) pursuant to the Ethiopian Proclamation No.621/2009. Likewise, ANE has been granted operational license from Federal Democratic Republic of Ethiopia (FDRE), Ministry of Agriculture to undertake humanitarian intervention programs on the key sectors associated with

disaster risk management and food security in eight regional states.

Upon its establishment, the initial ANE's humanitarian assistance programs were able to cover to address the need of affected people in Moyale, Udet and Liben Zones, Somali Regional State as well as Dillo, Megado, Bule-Hora districts in Guji and Borena Zones, Oromia Regional States, where many pastoral and semi pastoral people were suffering from recurrent drought.

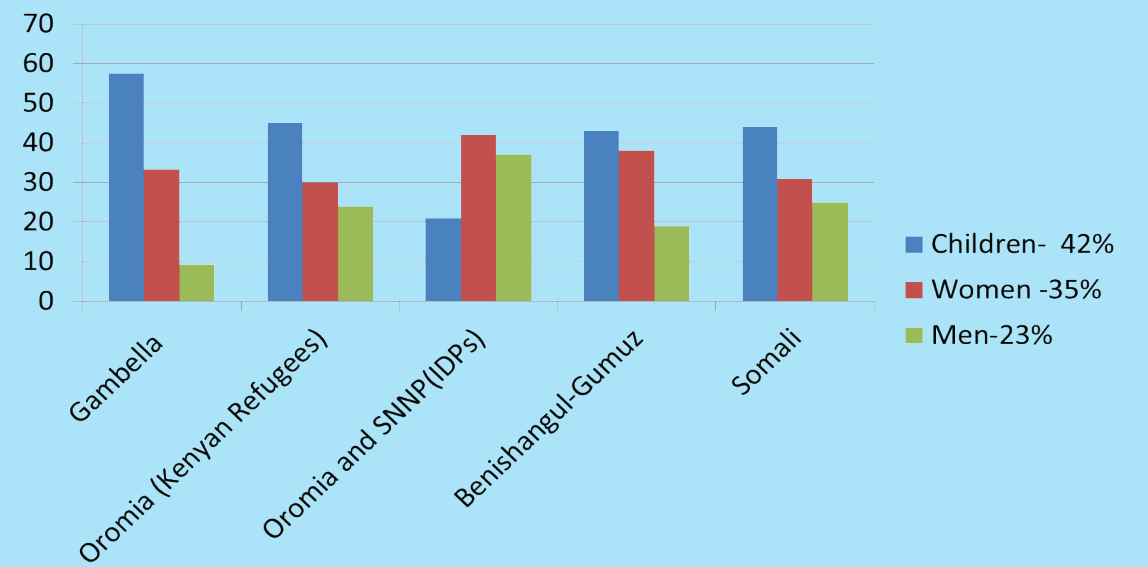
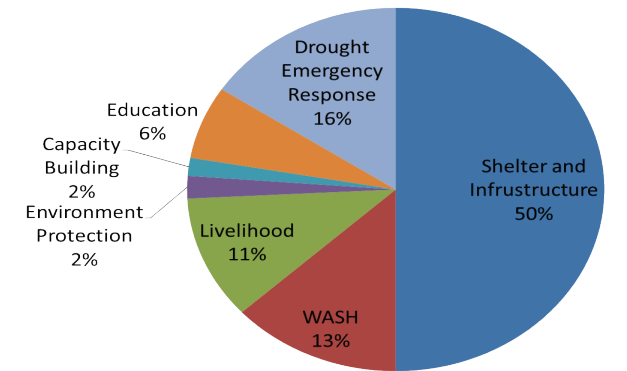
As part of its refugee program established on the basis of project partnership agreement made mainly with Ethiopian Government Counterpart, Administration for Refugees and

Returnees Affairs (ARRA), United Nations High Commission for Refugees (UNHCR), World Food Program (WFP) and International Organization for Migration (IOM), ANE currently provides multiple humanitarian services, which are particularly consist of Shelter, Infrastructure, WASH, Livelihood, Environment Protection, Energy and Psycho-Social support, so as to meet the basic need of refugees residing in Oromia, Gambella, Benishangul – Gumuz, ,Somali, Afar and Tigray Regional States, Ethiopia. In addition, it also responds to the current drought affected communities and Internal Displaced Persons (IDPs) in Oromia, Somali and South Nation, Nationalities and Peoples(SNNP) Regional States.

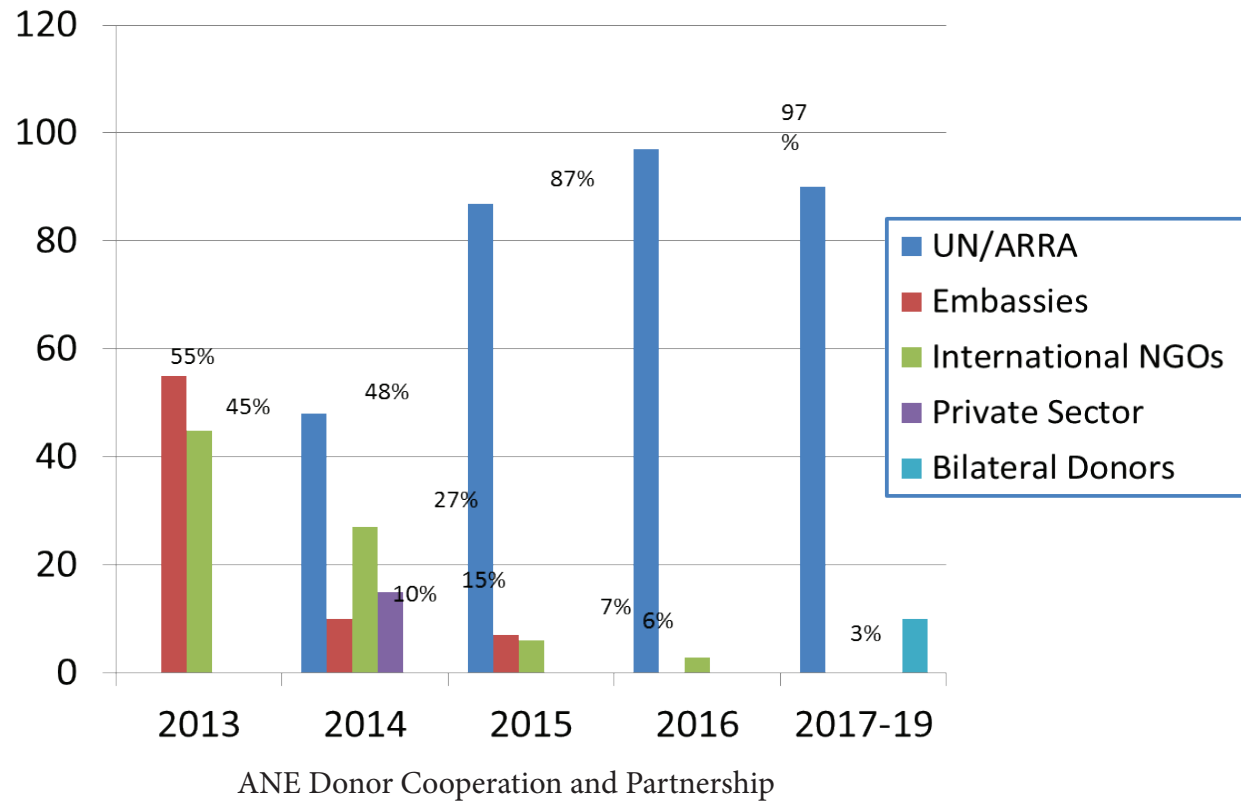
Since the establishment of the emergency response system in July 2018, under Ethiopian Government UNHCR and IOM, ANE has been able to continue provision of humanitarian assistances for people displaced as result of renewed inter-communal violence erupted in West Guji Zone and Gedo Zone, of Oromia and South Nation, Nationalities and People (SNNP) Regional States, Ethiopia.

In Eight-Year Project Implementation Periods (2013-2019), ANE, in partnership with multiple Ethiopian government organs as well as donors, was able to provide humanitarian assistances, under the thematic areas of Provision of Food and Core Relief Items(CRIs), Health, Water, Sanitation and Hygiene (WASH), Shelter and Infrastructures, Education, Livelihood, Emergency Services, Environment Protection, Energy and Psycho-Social Support for People with Specific Needs, so as to meet the basic need of more than 1.5 Million refugees, drought affected host communities and internally displaced persons in Oromia, Gambella, Benishangul – Gumuz, Oromia, Somali, South Nation Nationalities and Peoples (SNNP), Tigray, Afar Regional States of Ethiopia.

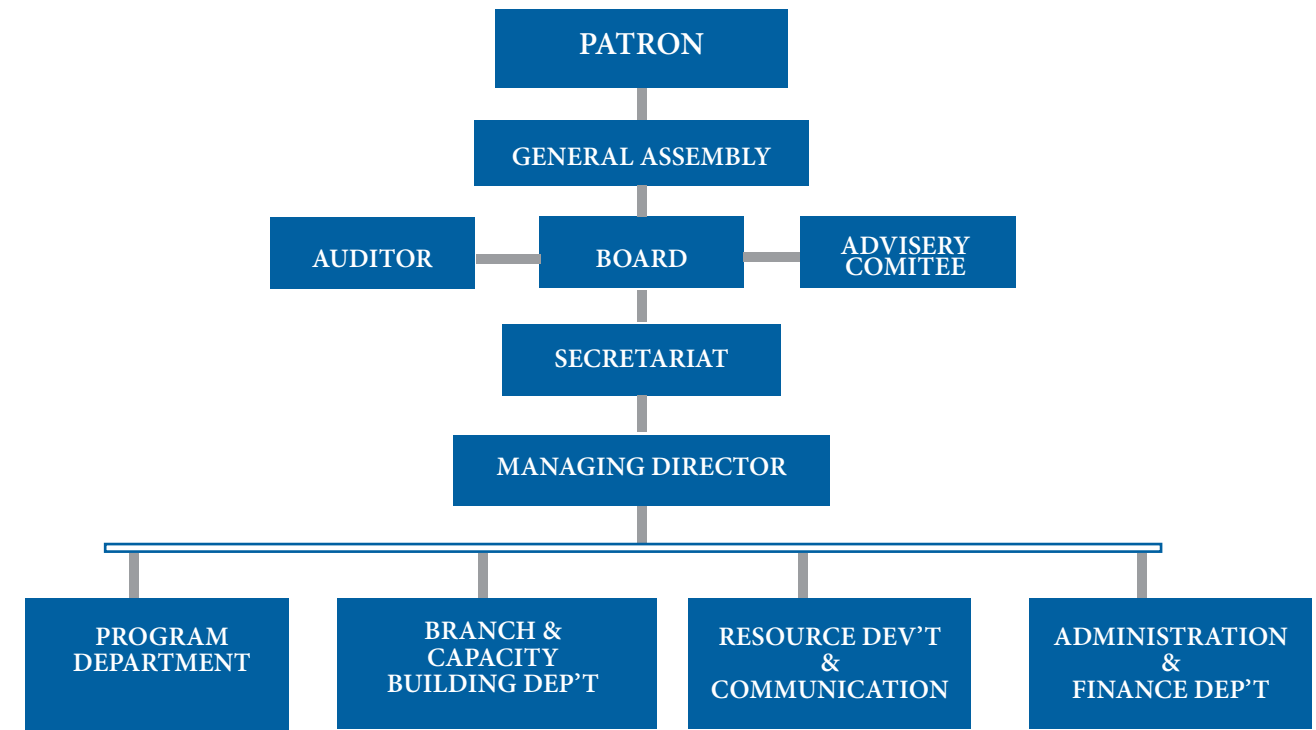
ANE Budget Expenditure by Sectors



Beneficiary Breakdown by Age and Gender (2012-2019)



ANE Organogram



ANE is currently recognized as one of a few locally established Civil Societies in Ethiopia with proven capacity being grown from time to time in reference to the provision of basic services responding to the humanitarian needs of refugees fled from neighboring countries.

Generally, ANE is running humanitarian programs in the funds provided by United Nations High Commission for Refugees (UNHCR), Qatar Fund for Development (QFFD) through by Qatar Red Crescent Society (QRCS), Turkish Cooperation and Coordination Agency (TIKA), World Health Organization (WHO), World Food Program (WFP), International Organization for Migration (IOM), Japan Embassy, UAE Embassy, Turkiye Diyanet Foundation (TDV), KIMSE YOK MU Africa Regional Office, International Orthodox Church Charities Ethiopia (IOCC-E), Cheshire Service Ethiopia, and others.

MANAGEMENT, STRUCTURES AND ROLES

Under the overall honorary guardianship of the Patron, direction of the general assembly that conveys every two years, constructive leadership by most experienced board members and executive management as well as effective works of dedicated staff members and volunteers, ANE is enabled to be considered as the strongest organization ensuring a streamlined process of leadership and management striving to address the dire humanitarian needs of most affected people in Ethiopia.

The General Assembly issues the overall strategic and policy parameters providing a common source of reference to ensure uniformity of standards at all levels. While the executive management is responsible for implementation, the Board provides oversight and monitoring of implementation of programs according to the policies and guidelines. The Board members also play crucial role in soliciting capacity building supports to the organization by mobilizing fund raising initiatives particularly in the abroad.

ANE currently has more than 300 national employees working at head office in Addis Ababa and five field coordination offices located in Somali, Oromia, Gambella, Benishangul Gumuz and South Nation Nationalities and people regional States.

ANE currently has more than 300 national employees working at head office in Addis Ababa and five field coordination offices located in Somali, Oromia, Gambella, Benishangul Gumuz and South Nation Nationalities and people regional States.

PARTNERSHIP AND COORDINATION

Partnerships and close collaboration form an integral part of the ANE's approach and program activities. ANE is committed to the core principles embedded in maintaining partnership with all stakeholders whilst serving to provide humanitarian assistances, which is based on mutual respect, trust, accountability, transparency and also strict adherence to the obligations to meet the needs of most affected people.

In Ethiopia, ANE closely works with the Government, Embassies, UN Agencies, Local/International Civil Societies, Individual Donors, Commercial Organizations and target most affected people by directly involving them over the organizational programming cycles so as to ensure that its humanitarian assistance efforts are apparently synergized for better outcomes.

OUR VISION, MISSION AND VALUES

VISION:

Creation of community & environment that can cope up any natural disaster and mitigate the risks of disaster.

MISSION:

To address the basic needs of the neediest (the most vulnerable) by mobilizing resources from national and international partners and supporters.

VALUES:

Integrity: Our track record of performance, serving both the refugees and the host communities, with a high degree of impartiality, ensures organizational and operational integrity in principle and action.

Trust-worthiness: We strive to ensure solid and sustainable trust-worthiness by maintaining a strong discipline of transparency and accountability at all levels in our organization and operations.

Diversity: The diversity of our services underscores our commitment to strong gender and age responsiveness, as women and children represent most of the beneficiaries in our operations.

Community Participation: The strong emphasis we place on community participation derives from the basic recognition of the critical role of the beneficiaries as primary stakeholders. We fully understand that nothing short of their full participation, creates the required dynamics that makes a difference in the management of our service.

Partnership Development: Based on our increasing performance and accountability, partnership development continues to stand out as the key factor that determines the degree to which our efforts can succeed with a strong process that ensures growing outreach and net-working.



FIVE YEAR STRATEGIC PLAN (2016-2020)

Based on the experiences gained and with full understanding of the implications of the diversity of humanitarian and development needs that have to be addressed in a comprehensive agenda, ANE's multi-sectorial engagements over the five year strategic plan between 2016 and 2010 are being directed under below indicated two strategic goals.

I. STRATEGIC GOAL 1

Continuation and consolidation of humanitarian service delivery, saving lives and mitigating

human suffering, based on comprehensive engagement in relief, recovery, rehabilitation and resilience.

II. STRATEGIC GOAL 2

Continuation and consolidation of livelihood support with increasing contribution to basic human development.

ANE ROLLING STRATEGIC PLAN (2019- 2021)

ANE has started giving effect to the implementation of recently adopted Three Years Rolling Strategic Plan (2019- 2021) in reference to its organizational Five Year Strategic Plan encompassing to enhance humanitarian interventions in

Ethiopia. Correspondingly, ANE has revised its strategic mission, vision, values or principles and motto given the growing unprecedented humanitarian situations, such as inter-communal conflicts and recurrent draught, exposing vulnerable people for displacement as well as various forms of risks.

Taking into consider the crucial importance, the Rolling Strategic Plan has also identified resource mobilization and efficient utilization, reducing vulnerability and building resilience, operational excellence and Communication and partnership as four strategic areas of focus/themes to realize optimal humanitarian interventions across the country.

PARTNERSHIP AND COORDINATION



KEY SECTOR BASED HUMANITARIAN SERVICE ACHIEVEMENTS (2012-2019)

ANE continues running and advocating humanitarian programs under the theme of 'Reaching the Most in Needy' to meet the basic needs of targeted Pastorals, Agro-Pastorals, Refugees, IDPs and other marginalized people living in the remote part of the country.

In the past Eight Years Reporting Period, ANE, in partnership with multiple Ethiopian government organs, UN Agencies as well as other donors, was able to provide humanitarian assistances, under the thematic areas of Provision of Food and Core Relief Items(CRIs), Health, Water, Sanitation and Hygiene (WASH), Shelter and Infrastructures, Education, Livelihood, Emergency

Services, Environment Protection and Energy as well as Psycho-Social Support for People with Specific Needs, so as to meet the basic need of refugees and host communities residing in Oromia, Gambella, Benishangul – Gumuz, Oromia, Somali, Tigray and Afar Regional States in Ethiopia. In addition, its humanitarian programs was expanded to reach out a drought affected communities and IDPs in Oromia, Somali and South Nation Nationalities and Peoples (SNNP) Regional States.

According to the compiled reports, ANE's sector based humanitarian programs between 2012 and 2019 was able to reach more than 1.5 million vulnerable people(Refugees, IDPs and Members of Local Communities with multiple risks) assisted with immediate responses helping to mitigate the plights they were facing on daily basis.



Budget Year (ETB)	Budget Source	Total Amount of Budget
2013	UAE Embassy, CHINA Embassy, WHO, TIKA	3,125,000
2014	UNHCR, Australia Embassy, TIKA, UP-STREAM Investment, China Embassy, Dashin Bank, Oromia International Bank, Oromia Cooperation Bank	5,151,620
2015	UNHCR, ANE, Japan Embassy, TIKA, Turkeye Danyat Foundation, KIMSE YO KUMO	34,397,169
2016	UNHCR, TIKA	17,967,369.00
2017	UNHCR, TIKA	133,613,172.00
2018	UNHCR, QFFD and WFP	312,700,000.00
2019	UNHCR, WFP and IOM	203,255,113.00
	Total Budget (All sources)	710,209,443
	Total Budget (All sources)	UAE Embassy, CHINA Embassy, WHO, TIKA

Total ANE Budget Amount and Description (2012-2019)

S.No	Name of Humanitarian Service Sector Implemented by ANE in the Past Eight Years (2012-2019)	Total Number of Beneficiaries Provided Assistance
1	Water, Sanitation and Hygiene (WASH)	550,000
2	Food and Core Relief Items(CRIs) Assistance	19,000
3	Health	1080
4	Shelter and Infrastructure	950,000
5	Livelihood	5190
6	Environment Protection and Energy	8100
7	Psycho-Social Supports for Children, Person with Disabilities, Women etc	9121
	Total	1,542,491

Humanitarian Service Sectors Implemented and Total Individuals Benefited (2012-2019)



Supplementary Food Ration distribution in Dillo and Megado Refugee camps in 2014



EIGHT YEARS HUMANITARIAN SERVICES ACHIEVEMENTS BY SECTORS

FOOD AND NUTRITION ASSISTANCE

With the funding supports secured from Omani based organization called Upstream Investment, a one month food ration was distributed for 673 Refugee Households in Dillo and Megado Refugee Camps, Oromia Regiaonl State during the 2014 budget year. The food ration package was consisting of 110

Quintals of Rice and 10 Quintals of sugar. In the same reporting period, ANE's effort to alleviate particularly the sufferings of Refugees residing in Dillo and Megado camps had gone further to the extent of helping them to improve the protein deficiency by distributing live sheep and goats for all 673 Refugees. Between the budget years of 2013 and 2014 alone, ANE furthermore distributed more than 3000

sheep and goats for 2100 Refugee and Host Community Households subsequent to the funding support provided TIKA / Turkiye Diyanet Foundation .

In June 2015, total of 5.25 tons of Wheat Flour, 1.575 tons of Beans and 0.35 tons of Edible Oil were provided by ANE for 700 Refugee Households in Dillo and Megado Refugee Camps with the view to cover a one month distribution

period. Through the funding provided, this ANE's critical humanitarian program was significantly assisted by KIMSE YOK MU Africa Regional Office, a Humanitarian Organization based in Turkey.

In September 2015, ANE was able to distribute total of 1,495 Sheep and Goats so as to address more than 700 Refugee Households in Dillo and Megado Refugee Camps, Oromia Regional State using the funding supports obtained from Turkiye Diyanet Foundation.

As the financial support provided by Rainbow Charitable Association (RCA) in 2016

budget year, ANE facilitated the distribution of food items to support 600 drought affected Households in Iteya and Digula-Ticho Woredas of Arsi Administrative Zone, Oromia Regional State. The food items and the distribution modality included 5Kg wheat Flour, 3Kg Rice, 3Kg Macaroni, 2Kg Sugar, 2Kg Beans, one litter Edible Oil and 2pices of Soap per each beneficiary.

In the partnership made with Turkiye Diyanet Foundation in March 2016, ANE distributed one month supplementary food ration consisting of 45.1 Quintals of Wheat Flour, 45.1 Quintals of

Rice, 22.55 Quintals of Lentil and 2,255 liters of Edible Oil for most identified 673 Refugee Household in Dillo and Megado Refugee Camps, Oromia Regional State . The ration size distributed per each beneficiary Household was inclusion of 6.7kgs of Wheat Flour, 6.7kgs of Rice, 3.35kgs of Lentil and 3.35 liters of Edible Oil.

In July 2017, ANE covered its own budget allocation served to provide total of 74.1 Quintals of Wheat Flour, 74.1 Quintals of Rice and 23 Quintals of Sugar for the most vulnerable refugee households located in Dillo and Megado Refugee Camps, Oromia Regional State.



Supplementary Food Ration Distribution



Cloth distribution to Orphan and Other Vulnerable Children in 2013 and 2014

In September 2017, ANE in collaboration with Turkish Dianet Foundation provided 1500 Sheep for 1,500 families from members of Refugee and Host Communities in Dillo and Megado Refugee Camps. This humanitarian assistance aimed to supplement nutritional need of the targeted communities and it was able to be undertaken in the presence of key delegation from ARRA Moyale Branch Office, Turkish Dianet Foundation, ANE HQ and Refugee Central Committees.

CORE RELIEF ITEMS (CRIS) ASSISTANCE

The distribution of children clothing donated from the Embassy of the United Arab Emirates (UAE) was carried out in both 2013 and 2014 Budget Years. In this humanitarian intervention, ANE managed overall distribution of 5,000 clothes for most identified vulnerable children, including Orphans for destitute, orphans living in Addis Ababa as well as Negelle, Bule-Hora, Moyale and Udet pastorals and refugees areas in Oromia Regional State.

HEALTH

In its health program implemented in 2014 Budget Year, ANE effectively underwent the distribution of multiple medicaments donated from WHO to health centers located in Negele, Moyale and Liben areas of Oromia Regional State, benefiting total of 12,000 peoples. In addition, ANE successfully conducted program launching and training workshop on prevention of communicable diseases targeting 50 persons represented from Guji and Borena Zone Administrative and Health Offices.

On the other hand, similar launching program in 2014 was conducted in Adola Town (Oromia Region) with the total budget of ETB 137,000 secured from the Embassy of Australia, Addis Ababa.

WATER, SANITATION AND HYGIENE SECTOR (WASH)

In the Eight-Years (2012- 2019) Project Implementation Period, ANE was able to continue to ensure running the Water,

Sanitation and Hygiene (WASH) projects in the funding provided by different donor organizations to assist vulnerable members of refugee and host communities in Gambella and Oromia Regional States. The WASH projects in the indicated locations were aiming to ensure that refugees and host communities have safe access to water of sufficient quality and quantity and to improved sanitation and hygiene in institutions, including schools, health facilities and public institutions. The main WASH

programs, which were run by ANE over the period between 2012 and 2019 and benefited more than 250,000 refugees and surrounding host communities, were Rehabilitation of Water Shames, Permanent Water System Management, Water Trucking, Household Latrine Constructions, Dignity Kits Distributions, Provision of WASH Materials, Comprehensive WASH Trainings, Outreach Campaigns on WASH Practices and WASH Awareness Raising Materials Distributions.



Cloth distribution to Orphan and Other Vulnerable Children in 2013 and 2014



Water Development Program supported by Japan Embassy in Bule – Hora(2015-2017)

DEVELOPMENT AND REHABILITATION OF WATER SHAMES IN OROMIA REGION

Under the development of water systems programs which were supported by Japan Embassy in Ethiopia, ANE exhibited outstanding performance in the Construction of 3 Springs Protections, Construction of 3 Hand Dug Wells, Construction of 2 Shallow Wells and Construction of 2 Rain Water Catchments. These all projects implemented between 2015 and 2017 budget years were able to benefit more than 6000 Households of the local

communities residing in Bule-Hora Woreda Administration, Oromia Regional State.

Likewise, ANE in collaboration with Turkish Cooperation and Coordination Agency(TiKA) successfully managed Rehabilitation of 2 Springs, 1 Hand Dug Well and 9 Shallow Wells benefiting more than 7000 local community households in Bule-Hora Woreda Administration, Oromia Regional State.

PERMANENT WATER SYSTEM MANAGEMENT

Under Gambella Refugee

Operation where the necessary funding provision made by UNHCR, ANE has been continued the operation and maintenance of Jewi Water Supply System in collaboration with ARRA and UNHCR since January 2017. This particular system uses Baro River as a source of water. Its treatment plant has the capacity to produce 1500 m³ of water/day. The treatment process is undertaken at treatment plant by adding appropriate amount of Aluminum Sulfate and Lime.

In Jewi water treatment plant; there are 6 T-95 storage tankers with the total capacity of 570m³. In this humanitarian intervention, ANE oversee this water system

Eight Years in Humanitarian Services (2012-2019)

management having two storage reservoirs, one with a capacity of 370 m³ and the other with a capacity of 330 m³. During the reporting period, Jewi water system served more than 61,190 members of refugee community as well as People more than 5000 members represented from host communities. ANE monitors the quality of the water at the storages and 97 water points', located in the refugee residential areas and other public institutions, levels regularly.

In 2019 alone, ANE Gambella Operation was able to deliver 357,294,000 liters of water for the Refugee, Members of Host Community and Other Public

Eight Years in Humanitarian Services (2012-2019)



Water Development Program supported by TiKA in Bule – Hora(2015-2017)



Jewi Permanent Water System, Gambella Regional State

Institutions in Jewi Refugee Camp. As it was assessed by ANE, Jewi permanent water system still requires supports to undergo substantial measures to replace its large water system accessories and enhance the capacity of water pipelines so as to ensure its sustainability for the provision of water for refugees in the years to come. Most importantly, its intake and treatment plant structures needs major upgrading work which will,

A. Reduce the amount of water treatment chemicals used on a daily basis and the possible effects of these chemicals in the long term.

B. Minimize the cost of Operation and maintenance in the long run and ease the Operation & Maintenance.

C. Increase the amount of water produced on a daily basis and deliver water with UNHCR Standard.

D. Standardize and comply with the Ethiopian water supply and sewerage office standards.

Similarly, its sedimentation tankers are observed with depleted capacity currently due to the long services and all require new replacements with the standard pioneer tankers and ANE already had been started replacement in 2018 budget year.

In 2019 budget year, ANE was working in partnership with Qatar Fund for Development (QFFD)/ Qatar Red Crescent (QRC), UNHCR and ARRA to establish permanent water systems for refugees living in Dillo and Megado refugee camps in Oromia Regional States. However, the drillings of water wells for the refugees settled at Dillo and Megado refugee camps have not been conducted due to delay in the

provision of funding need to be provided by QFFD through QRC. Meanwhile, ANE completed Geophysical and Geological feasibility Surveys which resulted in new findings on the increased financial requirements for the construction of the water systems than initially projected.

WATER TRUCKING

In both 2015 and 2018 Reporting Period, ANE intensively intervened in the water trucking

service to Jewi Refugee Camp, Gambella Regional State as it started its operation in the mid of 2015 by that hosting 47,821 refugees relocated from Lietchor and Nip Nip camps. In this regards, ANE provided refugees a total of 103,395,000 liters of potable subsequent to deployment of 15 water truckers with a capacity ranging between 10,000 and 20,000 liters.

As part of the WASH Project



Water trucks during loading and Transporting for Nguenyiel refugee camp



Water Trucking Operation for drought affected people at Arsi Zone Sode District in 2016

Components funded by UNHCR, ANE demonstrated successful performance implementation in running Emergency Water Trucking in Nguenyiel Refugee Camp, Gambella from 2016 to 2018 Budget Years using over 21 water trucks each with 20,000 liter capacity deployed. In this intervention, ANE managed to deliver an average of 1.1 Million Liters of standard water provision for more than 97,103 populations on daily basis. On the other hand, ANE also provided the water trucking services for

the refugees who were under relocation processes from Gambella to Assosa Operation during their temporary staying was made at Metu, Gimbi and other Way Stations.

Since July 2014, ANE has been able to continue water trucking provision in Dillo and Megado Refugee Camps. In this context, ANE purchased and installed 4 Fiber Glass Tankers of 20,000 liters capacity, distributed 673 water jerry cans of 20 liter capacity and masonry work for setting the tankers was

completed by availing its own fund. This services helped the timely 20 liters per day per person of water supply for the total of more than 8092 members of refugee and host communities on daily basis and but there is a serious concerns on its continuity after the laps of this projects granted by UNHCR unless the planned permanent water system is realized. According to various assessment conducted, the absence of permanent water provision interventions in both Dillo and Megado Refugee

Camps still remains as the major protection challenges for the refugees affecting their daily living conditions.

In November 2015, ANE deployed 20,000 liters capacity water trucker for Arsi Zone, Sude District – Oromia Regional State, where local communities residing in 13 Kebeles were severely affected by El-Nino induced drought. Therefore, ANE assigned a water truck for 5 consecutive months by covering the total rental cost of water trucker amounting ETB 350,000

from its own limited financial source until access to potable water was ensured following the onset of Belg Rainfall. By so doing, ANE supported the supply of potable water for more than 43,265 drought affected people until the month of April 2016.

Following the official request for support made by Liban Zone Administration Office, Somali Regional State, ANE successfully extended its intervention in provision of two months (May-July 2019) water supply through trucking and was able to

cover more than 100,000 local residents affected by lack of access to water supply as result of continued dry season in both Filtu and Deka Suftu Woreda Administrations.

LATRINE CONSTRUCTIONS

Funded by UNHCR in 2014, 2015 and 2016 Budget Years, ANE constructed 15 Communal Pit Latrines in Dillo and Megado Refugee Camps, Oromia Regional State. The construction of the communal



Latrines Constructed in Bule Hora Woreda (2015)

latrines was accompanied by awareness raising training given to community leaders and other beneficiaries on how to use these sanitation facilities.

In 2015, two Blocks of Communal Latrines with 6 seats were constructed by ANE in Saragi Health Post and Motogoma Hara School in Bule-Hora Woreda, Oromia Regional State following the funding support made by Japan Embassy, Addis Ababa. These latrines started to benefit an estimate of 7,000 people accessing both public facilities.

In 2017, ANE constructed 2 Blocks of Communal Latrines for

the newly established Pre-School in Megado Refugee Camp and the existing Pre-School in Dillo Refugee Camp, Oromia Regional State.

The refugee programs in Ethiopia are well known in having limited intervention in terms of provision of latrines for beneficiaries identified. In order to address the need of refugees in Gambella Refugee Operation, ANE provided latrine cleaning kits for the refugees who were in transits at Bonga, Bedelle and Arjo Stopover Sites as well as Metu and Gimbi Way Stations.

In the 2017 reporting period,

ANE entered into the project agreement with QFFD/QRC to construct the total of 460 family latrines in Neuenyyiel Refugee Camp but it has been put on hold due to the change of design attributed to the geographical situation of the camp. After site hand over made to ANE from UNHCR and ARRA, field assessment were conducted at Nguenyyiel refugee camp to examine the soil type of the camp, which more than 80% of the soil type in Nguenyyiel camp was found to be collapsible. Discussion was then held between ANE, UNHCR, ARRA and other implementing partners at

the field level. It was then decided to change the prototype from Pit Latrine to UDDT (Urine Diversion Dry Toilet) Latrine type. Detailed Bill of Quantities, Drawing and standard operating procedures for UDDT Latrine was prepared. Subsequently, ANE has sent official communication to QRCS to acquire endorsement on the new BOQ and Design prepared in the context of the latrines construction in Nguenyyiel Refugee Camp. The construction of these planned latrines would be made in 2019 budget year once the endorsement is obtained from QRCS to continue the implementation with the new design proposed.

Likewise, QFFD/QRC funded the construction of 71 family latrines implemented by ANE in 2018 planning years in Dillo and Megado refugee camps. As it has been evaluated by all partners and beneficiaries, all latrines constructions implemented by ANE during the reporting period apparently enhanced the living condition and well-being of refugees.

In 2017, ANE provided one block of two stance (male and female) latrine constructed along with flash system permanent, Hollow Concrete Block (HCB) walls, and cesspool for collection of waste and installation of 1000-liter overhang tank for water storage at Ngunyyiel Refugee Camp. The other construction of VIP flush



Latrine Finishing Works Completed in Ngunyyiel Refugee Camp, Gambella



Orientations for the Beneficiaries on Use of Dignity Kits



Set of the Dignity Kits Distributed



system latrine which is found in UNHCR's compound in the same location was completed with ceramic floor, gypsum wall plastering and painting.

DIGNITY KITS DISTRIBUTION

In 2018 budget year, ANE actively involved in distribution of dignity kits projects funded by QFFD/QRCS and targeted 1000 refugee women and girls getting assistance under Gambella and Kenyan Borena Refugee Operations. At Nguenyiel Refugee Camp in Gambella, this particular project activity

was conducted in collaboration with UNHCR, ARRA and Plan International. Subsequently, 500 Dignity kits were distributed for the total of 500 Young adolescent girls were selected from five different schools and with ages range from 13 -17.

Correspondingly, the similar project intervention funded by QFFD/QRCS also materialized the distribution of total of 500 Dignity Kits for 500 refugee women and girls identified over the selection of beneficiaries conducted in collaboration with ARRA and Refugee Central

Committee in Dillo and Megado Refugee Camps in Kenya Borena Refugee Operation.

The dignity kit distributed each refugee beneficiary comprised of: 3 Sanitary Pads, 3 Soaps, 2 Towels, 2 Underwear and A kit holder.

In order to ensure safe and proper use of the allocated dignity kits, continuous orientations were provided for the beneficiaries selected. Overall intervention has enhanced the protection of young adolescent girls in the way it contributed to improve their wellbeing.

COMPREHENSIVE WASH TRAININGS

In May, 2017, ANE facilitated 4 sessions of hygiene and sanitation trainings which ensured the participation of 35 incentive workers and members Refugee Central Committees from Dillo and Megado Refugee Camps, Oromia Regional State.

These trainings were aiming at to raise the awareness of refugee community on various topics associated with sanitation and personal hygiene.

As part of Integrated WASH and Shelter Project funded by QFFD/

QRCS, Two Comprehensive WASH training was conducted at Nguenyiel Refugee Camp, Gambella in collaboration with UNHCR, ARRA and Plan International and other concerned WASH Partners in 2018 reporting period. In

these trainings, 162 individuals, comprising members from school mothers, assistant teachers, school directors and female students, took participation and provided basic concepts on sanitation and hygiene practices. Main focus areas of training to raise awareness were on:

- a. Relating the concept of sanitation and hygiene practices into day to day lives of the refugees
- b. Major problems caused by the lack of sanitation and hygiene.
- c. Identification on good and bad hygiene and sanitation practices, good and bad personal hygiene practices and various diseases caused of poor domestic hygiene
- d. Discussions on the solution to minimize the risk of disease caused by the lack of proper hygiene and sanitation practices
- e. Create awareness the impact of sanitation and hygiene on the health, development and well beings
- f. Discussions and suggestions into improving sanitation and hygiene at schools and communities were another main focus area.

Despite the fact that it was planned to be carried out in the month of November 2018, similar Comprehensive WASH Trainings activities funded by QFFD/QRC

for the implementation by ANE in Dillo and Megedo Refugee Camps – Kenyan Borena Refugee Operation have been required to postpone to the 2019 budget year as they are essentially needed to go with the permanent water system which was projected to be functional in the same year but its construction is delayed with the a funding provided from QFFD/QRC .

OUTREACH CAMPAIGNS ON WASH PRACTICES

Under the project funded by QFFD/QRC in 2018, WASH outreach campaigns were conducted along with Oxfam International and other concerned partners in Nguenyiel Refugee Camp, Gambella with the view to raise community awareness on the proper WASH Practices. 170 Community outreach workers participated in the trainings which were able to adopt a participatory approach in order to encourage contribution from all participants through group discussions, demonstrations, role-plays, pictorial presentations, group exercises, etc. Then after, the trained outreach workers took part in the campaigns aided with information leaflets to give rise of the awareness of refugees to easily identify the good and bad hygiene behaviors.

The main objective of outreach campaigns was to increase the knowledge of the refugee community on proper hygiene and sanitation practices, approaches and skills necessary in community engagement - both children and adults. It also aimed at improving the hygiene and sanitation practice of the communities through information campaign programs led by community outreach workers and community leaders.

WASH AWARENESS RAISING WORKS

As part of the community awareness program funded by QFFD/QRC on sanitation and hygiene promotion, different visibility boards were installed by ANE at key public locations of Nguenyiel Refugee Camp, Gambella during the 2018 Budget Year. Additionally, ANE distributed information leaflets for refugees residing in Nguenyiel Refugee Camp, Gambella. Most importantly, these project interventions helped to increase community awareness on good sanitation and personal hygiene practices through the message delivered generally on proper disposal of waste, basic hand washing steps and fighting the spread of diseases such as TB, Cold and Influenza.



SHELTER AND INFRASTRUCTURES

In Ethiopia Refugee Operation, UNHCR has continued the objective to sustain or continue improving living conditions in all camps by providing and maintaining individual shelters, communal structures and other buildings. In order to achieve these objectives, the operation activities during this reporting period included the construction, rehabilitation, and transformation of shelters in

accordance with the operational shelter strategies covering all refugee camps located in Gambella, Somali, Benishangul – Gumz and Oromia Regional States.

Access road construction and maintenance activities were also part of the interventions undertaken to benefit refugees in Gambella, Assosa and Melkadida Operations. In 2018, ANE intensively worked on huge partnership maintained with both UNHCR and ARRA

through which humanitarian transportation is enhanced in Melkadida Operation subsequent to the maintenance and extension construction activities completed on Melkadida Airstrip. On the other collaboration made with WFP, ANE demonstrated its organizational capability after engaging in the construction of warehouse and other compound structures under Gambella and Assosa Operations in order to assist the aid programs designed to address the need of refugees.



SHELTER CONSTRUCTIONS

The Government of Ethiopia, together with UNHCR have identified provision of shelter assistance to the refugee in the camp as a major priority to avoid further health and protection risks in the camp. A considerable number of refugees are living in a temporary transit shelters in the Ethiopian refugee camps that don't meet the minimum UNHCR standard for refugees' shelter.

In Shelter Project, ANE usually consult ARRA, UNHCR and the relevant refugee structures in the camp to identify the

appropriate locations/sites for the construction of shelters in each camp location. At the camp levels, ANE also deploys technical and logistics staff members who are responsible to monitor and supervise the day to day construction activities to ensure they follow the minimum standards and quality.

EMERGENCY SHELTERS

ANE's responsibilities in terms of provision of emergency shelters were entailing to cover refugee camps administered under Kenyan Borena, Gambella and Assosa Refugee Operations

between 2012 and 2019 reporting period. This particular program interventions were focusing as part of efforts made to meet the basic needs of newly arrived refugees in the regions.

Having seen the great demand for shelter for those relocated Refugees from Ashura and Sherkole to Tsore temporary refugee location in Benshangul – Gumz Regional State, ANE constructed and handed-over 100 Tukuls Shelters by expending its own budget in 2015 fiscal year. The shelter construction materials were Eucalyptus Trees, Corrugated Iron Sheets, Nails,

Bamboos and Plastic Sheets. The 100 shelters were completed in one month period covering between 22th of August and 22th of September 2015. The size of the Tukul Shelter was 4meters by 5meters, which is standard for one household. It was evident that this shelter project intervention made by ANE was recorded to improve the safety, dignity and security of targeted vulnerable refugee households.

In the project partnership made with UNHCR and ARRA in 2015 budget year, ANE effectively constructed total of 258 emergency shelters in Dillo and Megado Refugee Camps. These shelters were constructed

using mud and bamboos and benefited more than 1500 vulnerable refugees arrived in Ethiopia to seek protection. This project demonstrated ANE's organizational capacity to respond to the plight of refugees in the country.

In consideration of the new refugee influx occurred in Gambella Region in 2017 budget year, ANE actively took part in construction of 400 family tents and 200 emergency shelters (Bajaj) in Pamdong Transit Center. Likewise, between 2015 and 2017 Reporting periods, other 3432 Emergency Shelters benefiting 17,160 individual refugee beneficiaries were built

by ANE in Terkidi, Negugnyyiel Refugee Camps, Gambella Regional State.

Between 2017 and 2019 Planning Years, construction of more than 2600 emergency shelters was completed respectively in Gure Shombolla and Tesore Refugee Camps in Assosa Operation, with the view to reach newly arrived South Sudanese refugees in Gambella Region and subsequently relocated to the refugee camps of Assosa Operation, Benishangul-Gumze Regional State.

In 2018, UNHCR was able to set the objective as to sustain or continue improving

living conditions in all camps of Gambella Operation by providing and maintaining individual shelters, communal structures and other buildings. In this context, ANE was able to construct 630 emergency shelters benefiting close to 3000 new refugees in Nguenyiel Camp.

Between May and July 2019, ANE, in collaboration with UNHCR, ARRA and RCC, has been able to conduct series of renovation activities covering more than 17 idle public structures located in Bokolmayo, Kobe, Helewyn and Buramino Refugee Camps, Melkadida Operation, Somali Regional State. These particular interventions supported to manage the reception of more than 2000 newly arrived Somali refugees previously registered in Eritrea. Likewise, ANE completed the construction of 150 Standalone Emergency Shelters (35 in Bokolmayo, 45 in Kobe, 30 in Helewoyn and 40 in Buramino Camps), which is apparently considered as one of great achievements continuing

to enhance assistance for newly arrived refugees in the operation.

TRANSITIONAL SHELTERS

Provision of Transitional Shelters for most people in need of immediate humanitarian interventions is one of areas in which ANE has been demonstrating its commitment to improve daily living condition by considering overall social, cultural and environmental factors in the context over all phases of programming implementation activities of such projects.

In its first experience of implementing the project, ANE was able to put the required resources that ensured the construction of 158 Transitional Shelters benefiting the most identified vulnerable refugees residing in Dillo and Megado Refugee Camp, Oromia Regional State in 2015 budget year. Later in 2016, ANE addressed the need of vulnerable refugee households

by constructing 150 similar types of shelters in collaboration with Refugee Community, ARRA and UNHCR. Generally, this shelter construction project was particularly consisting of key activities related to Physical Surveying, Pit Excavation, Construction of Concrete Foundation, Framing the Roof Structure using Wood Poles and Iron Sheets, walling along with internal and external mud plastering and finally Fixation of Doors.

In 2017, the construction of 612 Transitional Shelters, of which 312 in Terkdi and 300 Nguenyiel Refugee Camps, Gambella Regional State, was significantly managed by ANE subsequent to the funding and other partnership supports provided by UNHCR and ARRA respectively. This shelter construction was consisting key activities related to Physical Surveying, Pit Excavation, Framing the Roof Structure using Wood Poles, Plastics Sheet, Grass

Thatching, Bamboo walling along with internal and external mud plastering and finally Fixation of Doors.

In Gure Shambula Refugee Camp – Benishangul Gumz Regional State, total of 380 Transitional Shelters were provided to the vulnerable refugees after constructed by ANE in collaboration with ARRA and UNHCR in 2017.

Following the partnership call made by UNHCR and ARRA for ANE to operate for the first time in Melkadida Refugee Operation for humanitarian assistance in 2017 Budget Year, ANE exhibited profound organizational capacity by ensuring the construction of 200 Transitional Shelters, basically with Concrete Foundation, Iron Sheet Roofing and Bamboo Wall Structures, within short period in Heleweyne and Buramino Refugee Camps, Somali Regional State.

Under Gambella Refugee Operation, ANE completed

construction of 700 transitional shelters through the funding supports provided by UNHCR in 2018 budget year. Meanwhile, construction of 500 transitional shelters, in partnership with QFFD/QRC, was completed. In the transitional shelter construction processes maintained in Gambella Operation, the activities related with grass thatching and mud plastering were conducted by the refugee beneficiaries after the community mobilizations programs organized in collaboration with refugee zone leaders. ANE technical team provided the refugee beneficiaries the necessary trainings and tools to engage them in the construction undertakings.

Similarly in 2018 Programming Year, total of 110 Transitional Shelters were constructed by ANE in Gure Shombola Refugee Camp, Assosa Operation. After the official handover process maintained, 100 shelters were

allocated to the members of the refugee community and the other were provided for 10 members represented from the host community. On the other hand, total of 15 Transitional Shelters /Tukuls/ were constructed in Tsore Refugee Camp, Assosa Operation and subsequently handed over for refugees selected on the basis of official procedures maintained in full participations of ANE, UNHCR, ARRA and Refugee Management Structures.

In order to assist refugees in need, Under Nguenyiel Refugee Camp, Gambella, ANE completed construction of 868 transitional shelters through the funding supports provided by UNHCR during the 2019 budget year.

As part of the pilot project enabling to introduce new shelter type in 2019, ANE successfully managed the construction 20 mud brick transitional shelters in Nguenyiel Refugee Camp, Gambella. Both ARRA





Emergency shelters in Dillo and Megado Refugee Camps (2015)

and UNHCR are studying on the feasibility of this shelter prototype anticipated to improve the living condition of refugees in the future. Similarly, 4 pilot mud brick transitional shelters were constructed in both Gure Shombola and Tsore Refugee Camps of Assosa Operation.

IMPROVED TRANSITIONAL SHELTERS

In the most critical steps made in the refugee program so as to improve the daily living conditions of refugees, ANE has been remaining to be one of the strongest partners to both ARRA,

UNHCR and also to the refugee community itself by partaking in the humanitarian programs linked with the provision of Improved Transitional Shelters particularly in the refugee camps located in both Somali and Oromia Regional States.

In 2017 Budget Year, ANE took significant leadership in piloting the first Improved Transitional Shelter Project in partnership with ARRA and UNHCR and covering Heleweyne and Buramino Refugee Camps, Melkadida Operation – Somali Regional State. In this program, ANE was able to satisfy the most selected vulnerable

refugee households and one host community member by providing total of 104 Improved Transitional Shelters made along the key structures known as Concrete Foundation, Hallo Concrete Blocks(HCBs) Walling, Standard Iron Sheet Roofing and Doors as well as Windows made of Standard Iron Sheets. In the context of Melkadida Refugee Operation, this project aims to replace previously constructed Bamboo made transitional shelters which are basically known to have short life span as they are persistently affected by termites then after led to expose refugees to various forms of safety and security risks. The

project also plays key roles in improving the dignified living condition of refugees.

In 2018 Reporting Period, construction of 261 Improved Transitional Shelters (69 in Boklomayo Camp, 42 in Melkedida Camp, 41 in Kobe Camp, 41 in Heleweyn Camp and 68 Buramino Camp) was completed by ANE. Whereas, 272 Improved Shelters (62 in Boklomayo Camp, 50 in Melkedida Camp, 50 in Kobe Camp, 50 in Heleweyn Camp and 60 Buramino Camp) in 2019 programming year. Generally, this shelter project continued to improve the living conditions of selected beneficiary refugees by

In November 2017, ANE considered substantial maintenance for the total of 130 shelters with the range of damages at Dillo and Megado Refugee Camps, Oromia Regional State.

ensuring security and making it more dignified. Considering its significance for durable use, ANE constructs improved transitional shelters in Melkadida Camps, Somali Regional State using standard Hallow Concrete Blocks (HCBs) with designed dimension of 6mx3.5m.

Youth Education Pack (YEP) graduate refugees were deployed as part of the efforts to enhance community participation in the Melkadida shelter project run by ANE in 2018 and 2019. Female YEP graduates particularly demonstrated their building construction skills over the shelter project run by ANE in partnership with UNHCR and



ARRA. As they were directly engaging in shelter construction activities, these YEP graduates were inspiring other young female refugees as to enhance their active participation in the community. In both budget years, the shelter construction was able to create job opportunities for the total of 186 YEP graduates in all camps of Melkadida Operation.

In relation to Integrated Shelter and WASH Project funded by QFFD/QRCS in 2018, construction of 52 of them (20 in Dillo and 32 in Megado Refugee camps of Kenyan-Borena Refugee Operation) was completed and dignified the living conditions of refugee beneficiary households selected considering large family sizes and depleted condition of their shelters.

SHELTER MAINTENANCES

In November 2017, ANE considered substantial maintenance for the total of 130 shelters with the range of damages at Dillo and Megado Refugee Camps, Oromia Regional State. With the funding supports provided by UNHCR, ANE had undertaken the maintenance activities by engaging the refugee beneficiaries along the technical supports availed by hired carpenters. This intervention helped the refugees to have extended period use of the shelters.

Subsequent to all the preparation and material mobilization undertaken in the 2018 Project Implementation Period, ANE was able to complete the necessary

maintenance of 691 transitional shelters in Bambasi, Sherkole and Tongo Refugee Camps, Assosa Operation. In this intervention, total of 411 considered major maintenances whereas 280 shelters were able to undergo minor maintenance.

In 2019, ANE was able to complete the necessary maintenance for 236 transitional shelters in Bambasi, Sherkole and Tongo Refugee Camps, Assosa Operation. On the same period, total of 210 transitional shelters went through the major maintenance activities as to benefit refugees living in Kule, Jewi and Tarkidi Refugee Camps, Gambella Refugee Camps.

ACCESS ROAD, ROAD STRUCTURE CONSTRUCTIONS AND MAINTENANCES

Over the past five years reporting period, ANE demonstrated outstanding performance in the entire humanitarian efforts made to create refugees, under different operation in Ethiopia, access to road infrastructures. As most of the refugee camps are located in the remote areas lacking basic infrastructure, ANE assisted the refugee programs through the management of Access Road, Road Structure Construction and Maintenance activities in the refugee camps located in Gambella, Benishngul-Guze and Somali Regional States. In this context, ANE's project implementation carried out between 2012 and 2018 was able to achieve substantial outcome for the refugees to have easy access to key areas and public facilities within their camp location. It also helped to ease medical evacuations using ambulances in the refugee camps.

In 2016, ANE built the first 20 km gravel access road connecting Terkidi and Nguenyiel Refugee Camps, Gambella Regional State. Consequently, the constructed access road started to enhance humanitarian services to reach out refugees residing in both camp locations in timely manner.



Access Road Maintenance in Gambella Refugee Camps (2018)





In Melkadid Operation, ANE, in partnership with ARRA and UNHCR achieved Construction of total of 5.3 km access roads (2.6km in Kobe and 2.7 km in Heleweyne Refugee Camps), along with 5 culverts and 1 additional one ford as well as installation of metal made different traffic sign boards, were completed during the 2017 budget year.

In 2017, total of 12 km of gravel access roads were also constructed by ANE in order to connect Nguenyiel Refugee Camp, Gambella Regional State, with the main national roads as well as to connect key public areas within the Nguenyiel Refugee Camp locations itself. In the related intervention considered concurrently, ANE materialized maintenance activities on 20 km gravel access road it constructed in 2016 and connecting Terkidi and Nguenyiel Refugee Camps, Gambella Regional State. Both

the access road construction and maintenance activities conducted by ANE through dumping first and second layers selected material and compactions using heavy trucks and road machines.

Following the support request extended by both UNHCR and ARRA, ANE effectively finalized implementation of key maintenance works on 4.1km access road connecting Tongo Refugee Camp, Benishangul – Gumz Regional State to the main section of nearby Tongo town. In order to mobilize this activity, ANE deployed of heavy road machineries such as excavator, grader and roller as well as shower trucks and dump trucks.

Through spreading and compaction of selected materials, ANE demonstrated its important partnership to the refugee program in 2017 Budget Year by undertaking clearance of 2 km access road taking the

refugee reception center in Gure-shembola Refugee Camp, Benishangul-Gumz Regional State. On the other hand, ANE Installed four traffic sign posts on the main road connecting to Gure-Shembola with the view to alert drivers on traffic speed limitation that is need to be 30K/H in the close by areas being habited by the refugees. Moreover, ANE constructed 15 speed bumps and 2 speed bump sign boards to give more awareness on slow traffic situation considering daily safety of refugees residing in the same camp location.

In collaboration made UNHCR and ARRA in 2017, ANE managed the construction of **2-foot bridges** in the total length of 55 Meters (15M foot bridge between the reception center and Zone-A and 40M foot bridge between Zone-A and Zone-B) inside Gure-Shambola Refugee Camp, Benishangul-Gumz Regional

State in order to facilitate easy movements by refugees.

In 2017 Budget Year, ANE successfully completed the construction of huge slab bridge at Bambasi Refugee Camp, Benishangul-Gumz Regional State. For the effective implementation of this humanitarian bridge construction project, ANE initially undertook relevant assessments on the condition of exiting bridge, method of demolishing of the existing bridge and materials availability for the construction of this new bridge. In order to assist the construction activities, ANE considered deployment of one excavator machinery, construction of one detour bridge, deployment of one mixer lean and construction of two masonry abutments, which the first side constructed up to 4meter high(reaming with 1meter) and the other side which is 6meter high as well

as construction of 3.3 meter masonry wall .

In June 2017, ANE took part in the maintenance of 150M length by 8 meter width access road linking ARRA Camp Office in Sherkole Refugee Camp, Benishangul-Guze Regional State. In this part, the key maintenance activities had consisted of supply of masonry stone, selected materials and site clearance and compaction.

In 2018 reporting period, 11 km access road maintenance (3.5km in Nguenyiel Camp, 2km in Tierkidi Camp and 6.3km in Kule with 12 drainage culvert constructions as well as 2km drainage ditch excavations) was undertaken in Gambella Operation. This humanitarian program enabled to achieve mainstreaming enhanced the accessibility of public facilities in all camps by the refugees.

On the other access road

maintenance programs implemented in 2018, 2.7 Km access road in Tsore Refugee Camp and 1km access road in Bambasi Refugee Camp, Benishangul-Gumze Regional State, were considered respectively along with the completed construction of 6 fords as well as 3.7 km Earthen Drainage ditch excavation that was similarly completed in 2018 reporting period.

In 2019, ANE was able to manage the construction and maintenance of 19 kms access roads in Pungido 1, Pungido 2, Nygnuuel, Terkidi and Sherkole camps of both Gambella and Assosa Refugee Operations respectively.

Under the 2019 access road maintenance programs, 8 Kms access road in Punido 1 and 2 Refugee Camps, Gambella Operation, was considered along the construction of 8 new drainage culverts. Additionally,



ANE conducted the regular maintenance activities with construction of 4 new drainage culverts on 4kms access road located in Jewi Refugee Camp, Gambella.

By adding the construction of 3 Fords and 1 Box culver, 0.9 kms of access road in Sherkole Refugee Camp was maintained under the 2019 budget year.

MELKADIDA AIRSTRIP MAINTENANCE AND EXTENSION WORKS

In November 2017, ANE initially engaged in the construction undertakings adding its own budget contribution over the newly built 900 Meters Melkedida Refugee Operation

Airstrip, Somali Regional State following offer for assistance provided by ARRA and UNHCR. In terms of Transportation, the new Airstrip will enhance the humanitarian interventions to meet the need of refugees and members of host community in surrounding areas.

Subsequent to the intervention which was made as part of the project descriptions stipulated later in 2018 PPA, ANE furthermore contributed its significant funding resources into Melkedida Airstrip maintenance of 800 meter and 400 meter extension construction works that were successfully completed in the reporting period. The airstrip is open for humanitarian community with enhanced capability in transporting additional people and cargos.

According to the report provided by ANE focal engineering team, the general maintenance of the 800 meters runway of Melkedida Airstrip was done in addition to the tunneling of the sideway drainage systems made in conjunction with. As part of the construction activities, huge site clearance activities were carried out on the extended part of Melkedida Airstrip, which covers a total of 400 meters length of land. The activities also include removing of unnecessary soil structures in depth of 1.4 meters from the 150 meters length of the earth structure of the airstrip extension part. Both UNHCR and ARRA praised ANE for its devoted works which were able to materialize the completion of the construction activities adding enhanced capacity for the refugee



program highly dependent on such transportation system to deliver assistances for people of concerned in timely manner.

OTHER INFRASTRUCTURES

In both 2018 and 2019, ANE demonstrated successful implementations in regards to warehouse concrete platform construction, warehouse

maintenance, compound improvement works as well as latrine and shower construction under Gambella, Assosa, Tigray, Afar and Somali Refugee Programs as funded by WFP.

After receiving requests made for support from ARRA, Plan International and the nearby Kebele Administrations in 2018, ANE also maintained its

interventions, apart from the activities enshrined in PPA, on the following areas in and out of Bambasi and Tsore Refugee Camps, Benishangul-Gumze Regional State to meet its social responsibilities to address the challenges occurring in the refugee programs and surrounding host communities. Major interventions made in this context were:



Warehouse Concrete Platform and Latrine Construction by ANE, Gambella and Tigray Camps (2018 and 2019)

100 meter gate road maintenance to GAIA Association Tsore Field Office's Ethanol Fuel and Stove Sale Centre.

Minor maintenance (roadbed preparation) of 1000 meters access road from ARRA Office Compound to Community School in Tsore Refugee Camp.

Maintenance (roadbed preparation) of 200 meters access road from WFP Food Storage Site to UNHCR Backyard in Tsore Refugee Camp.

50 meters roadbed preparation conducted for IRC Reproductive Health Centre at Tsore Refugee Camp.

ANE in collaboration with Plan International was able to undertake maintenance for two soccer fields located in Tsore Refugee Camp.

Maintenance of ARRA staff Tsore Soccer Field/ football stadium. ANE also cleared a new soccer field for the Dunga Arumela Kebele administration.

ANE also assisted Dunga Arumela Kebele Administration by providing selected materials. The selected materials used to cover different abandoned holes with large depth as it was risking the life of children living in the surrounding locations. It also protects water pipeline from eroding.

100 meters access road takes to ARRA gate was maintained in Bambasi Refugee Camp. 50 meters road takes to fuel depot was maintained in Bambasi Refugee Camp. 150 meters road maintenance inside ARRA Health Centre in Bambasi Refugee Camp. Maintenance of 100 meters road

takes to the food distribution centre Bambasi refugee camp

Minor maintenance (cut and fill) of 1000 meters access road for the host community members under Arbaand Kebele Administration, near to Babambasi Refugee Camp.

The Partnership which was maintained among ANE, UNHCR and ARRA was able to gain special recognition by the refugee stakeholders and host community because of the direct involvements made to rehabilitate different infrastructures as highlighted above. In addition, particular interventions also improved the situation of refugees and host communities to access public facilities in easily manner.

In the 2018 reporting period, ANE also mobilized wheel compactor

and loader which materialized proper maintenance on the damaged sections/bridges of the main road connecting the refugee camps of Boklomayo and Melkedida, Somali Regional State. This intervention apparently played a crucial role in order to resume the functionality of the highway for humanitarian assistances as well as enhance public recognition and awareness regarding the humanitarian activities which are run by ANE in Melkedida operation.

In 2018, ANE assisted in considering maintenance for leaning Tukul in Jewi UNHCR compound as well as Construction of L3 temporary registration centres at Kule and Tierkidi Refugee Camps of Gambella Operation.





EDUCATION

In November 2015, ANE, in association with KIMSE YOK MU Africa Regional Office, had supported 600 Orphan Children through provision of educational materials (School Bag, Exercise Books, Pens and in Abomsa Town, Arsi Zone, Oromia Regional State. Each beneficiary orphan child had received one (1) Dozen of Exercise Book, Twelve (12) Pens, Twelve (12) Pencils and One (1) School Bag. The distribution of education materials for these

vulnerable children had been made in the presence of Merti Woreda Administrator, Mayor of Abomsa Town, and Head of Merti Woreda Education Office and invited Elders of Abomsa Town.

In 2017 Budget Year, ANE had provided educational material supports for total of 147 host vulnerable children residing in Gure-Shombola Kebele Administration, Benishangul-Gumz Regional State. The distributed educational material

included 1764 Exercise Books, 147 Pens, 147 Pencils, 147 Erasers and 147 Sharps procured using its own funding.

In 2017, ANE undertook humanitarian project implementation for the construction work of Pre-School, feeding center and teachers' residence compound Structures in Megado Refugee Camp, Oromia Regional State. In connection with this project, ANE also provided the necessary pre-school class equipment such

as 100 Desks, 4 Black-Boards and 1 Pack of White Chocks and 1 Pack of Dusters supporting the teaching and learning processes in the newly built Pre-School.

As part of efforts made to enhance the education program benefiting children from the refugee and host communities in 2019 budget year, ANE assisted both ARRA and UNHCR in construction of School Feeding Centre in Tsore Refugee Camps, Assosa Operation.





ENVIRONMENT PROTECTION AND ENERGY

In collaboration with ARRA and UNHCR, ANE continued on Environmental Protection and Energy activities in Dillo & Megado Refugee Camps, Oromia Regional State, between 2015 to 2019 budget years. In this program, seedlings were planted in both refugee camps to reduce deforestation and environmental degradation. In addition, ANE provided four trainings to raise awareness on environment protection. This project also included provision of energy saving stoves for refugee beneficiaries identified over the joint selection made by ARRA, UNHCR, ANE and Refugee Management Structures.

ANE provided 8 sessions of training is given for refugee community on environmental protection. This project also included distribution of 673 coking pad for refugee household beneficiaries identified over the joint selection made by ARRA, UNHCR, ANE and Refugee Management Structures.

SUPPORTS FOR PERSONS WITH SPECIFIC NEEDS

Through the partnership established with Cheshire Service in Ethiopia on 2017, ANE provided orthopaedic materials supports for 650 members of refugee and host communities in Dillo and Megado Refugee Camps, Oromia.

ANE, in collaboration with ARRA and RCC, identified 155 refugees with specific needs who were subsequently provided materials and direct cash support under Kenyan Refugee Operation in 2018 budget year.

ASSISTANCES FOR INTERNALLY DISPLACED PERSONS (IDPS) RETURNEES

Since the establishment of the emergency response system in July 2018, under UNHCR and government leadership, ANE has started humanitarian assistances for people displaced as result of renewed inter-communal violence erupted in Gedo Zone and West Guji Zone, of South

Nation, Nationalities and people (SNNPR) and Oromia Regional States, Ethiopia. Subsequent to the ethnic clash occurred beginning of April 2018, more than 800, 000 were displaced and exposed for various forms of protection risks in both Gedo and Guji Zones. On October 2018, ANE signed Tripartite Project Partnership Agreement with both UNHCR and ARRA to strengthen site management systems (SMS), rehabilitation of public facilities, including WASH, as well as to provide capacity building assistance to the local administration.

Moreover, ANE has accumulated profound experiences in organizing capacity building trainings conducted in 2018 in Gedo Zone and West Guji Zone, of South Nation, Nationalities and People (SNNPR) and Oromia Regional States in regards to Community-Based Protection and Assistance for IDPs, with the supports and in collaboration with UNHCR and ARRA, for selected IDPs management structure, officials of local administrations and other focal stakeholders.

In the view to reinstate

effective use by IDPs and local residents in both Gedo and Guji Zones currently, in 2018 budget year, ANE was able to successfully demonstrate organizational capacity with persistent commitment on the rehabilitation works being conducted on identified IDPs shelters, 23 site management systems and 13 public facilities (Schools, Health Posts etc) to mainstream protection, access to basic facilities and improved sanitation and hygiene conditions for most affected people of concerns in the project sites. Likewise, ANE continues



to ensure capacity building supports to the local government administration over the provision of trainings and materials on IDPs site management systems to facilitate humanitarian assistance and sustainable peaceful co-existence among the communities in dispute. To summarize the main activities achievement were:

9 public schools and communal public infrastructure rehabilitated and 4 minor public health facilities were renovated, 12 former IDPs sites and collective centers were decommissioned, restored, and clean – up in five (5) woredas, The capacities of 170 woreda and kebele SMS committees were enhanced through SMS training, Different materials for site cleaning purchased and used for site cleaning, Government institution supporting the IDPs assistance was supported with key office equipment and materials(Printer, Computer Photocopy etc) for five woredas and Staff which could support the project recruited and trained with the necessary course to ease project implementation.

In 2019 budget year, ANE demonstrated outstanding work performance in the context of creating IDP Returnees in West Guji Zone(Oromia) and Gedio Zone(SNNP) by creating access to shelter, ESNFI kits distribution, latrines constructed in Health Posts, improved hygiene programs by distributing WaSH NFI and dignity kits for IDP returnees , to permanent water system improved through rehabilitation of water schemes in Bule Hora Woreda, health service improved by construction of one block with three rooms SGVB and rehabilitation of impatient block in Bule Hora Hospital, IDP returnees and as well as by construction of two OPD block with three rooms, education by construction of school block and teacher’s office providing learning materials for IDP returnee students in both West Guji and Gedeo Zones.



Distribution of WaSH NFI and Dignity Kits



Summary on 2019 IDP Project Achievements – West Guji and Gedio Zone Administrations

No	Type of Service Delivery	Number of Beneficiaries	Location	Donor	Description of Achievements
1	Permanent Shelters	850 HHs	West Guji and Gedee Zones	UNHCR	ANE constructed 850 permanent shelters, from which 550 shelters for west Guji Zone and 300 Shelter for Gedee Zone IDP returnees.
2	Distribution of ESNFI	3000 HHs	West Guji and Gedee Zones	UNHCR	ANE registered 3000 HHs IDP returnees and distributed ENSFI such as blanket, mat, jerikan, kitchen set and laundry soap as received the items from UNHCR. Additionally, ANE provided blanket and jerikans for Bule Hora Referral Hospital, West Guji Zone women and children affair office, Gedee Zone and Kochere Woreda Health Office.
3	Sustainable water supply	>48,000 Indv	West Guji and Gedee Zones	IOM and UNHCR	<p>With the view to support for IDP returnee residing in 12 Kebele of Bule Hora Woreda, ANE Rehabilitated the following of water schemes (IDP returnee Woredas);</p> <ul style="list-style-type: none"> - 5 shallow well - 2 hand dug well, - 6 on spot spring - 27 water schemes where disinfected with chemicals and hand over to the community. <p>Additionally, with the UNHCR funding support, one shallow well located in Gedee zone,</p> <p>Kochera Woreda, Baya 1st and 2nd cycle primary school were rehabilitated.</p>
4	WASH NFI and dignity kits Distribution	>8,000 Indv	Borena, West Guji and Gedee Zones	IOM	<p>Receiving WASH NIF from IOM, ANE distributed the following WASH NIF for 1800HH IDP returnee's in Bule Hora Woreda,</p> <ol style="list-style-type: none"> 1. Detergent/soap 2. jerrycan, 3. Solar lamp 4. NFI bag 5. Washbasin <p>Also dignity kits consisting of underwear, sanitary pad, body soap, laundry soap, whistle, glycerin/lotion, plain bag were distributed for more than 1400 IDP returnee's school girls.</p>

5	Communal, HH Latrines and Waste Pits	>8,000 Indv	West Guji and Gedee Zones	UNHCR	ANE constructed 8 communal latrines, 8 solid waste pits and 8 foundations for water tanker (in five IDP collective sites in West Guji Zone and Gedee Zone)
6	Health	>30,000Indv	West Guji and Gedee Zones	UNHCR	<ol style="list-style-type: none"> 1. Rehabilitation of two health posts, one in West Guji (Kercha woreda, Bukisa Kebele) and one Gedee Zone (Kochera Woreda Jeldo Kebele) 2. Construction of two new health posts, one in West Guji (Hambela Wamena woreda, Sika Bokosa Kebele) and one Gedee Zone (Kochera Woreda Baya Kebele) 3. Construction of One SGVB block and rehabilitation impatient block in Bule Hora Hospital. 4. Provision of furniture for newly constructed health institutions.
7	Education	>20,000 children	West Guji and Gedee Zones	UNHCR	<ol style="list-style-type: none"> 1) Construction of one block student class rooms, one block of teachers' office and one latrine block at two school, one in West Guji (Sika Bokosa 1st and 2nd cycle School) and one Gedee Zone (Baya1st and 2nd cycle School). 2) Distribution of learning materials for 2760 and 4000 student bags ID returnee students in West Guji and Gedee zones
8	Livelihood	3520 HH	West Guji and Gedee Zones	UNHCR	Installation two of grading machine with grading house, one at West Guji Zone, Hambela Wamena woreda Sika Bokosa Kebele Kebele and one at Gedee Zone, Kochera woreda Baya Kebele.

*Reaching
& Serving
the most Vulnerable*



ASSISTANCES FOR OTHER AFFECTED POPULATION

ANE signed mutual working agreement with Rural Organization for Betterment of Agro-pastoralists (ROBA). ROBA and ANE are two local NGO that operate to address humanitarian needs of the most vulnerable communities of Ethiopia. ROBA had been established by concerned community leaders in the rural area of Oromia Region and had provided emergence and development services to the needy grass roots communities for the past 22 years. ANE, on the other hand, had been established by concerned intellectuals, government officials and community elders and operated in refugee, emergency and development program sectors for the past seven years. Both organizations are working under the legal license provided by the government and following the rules and regulation & ECSA.

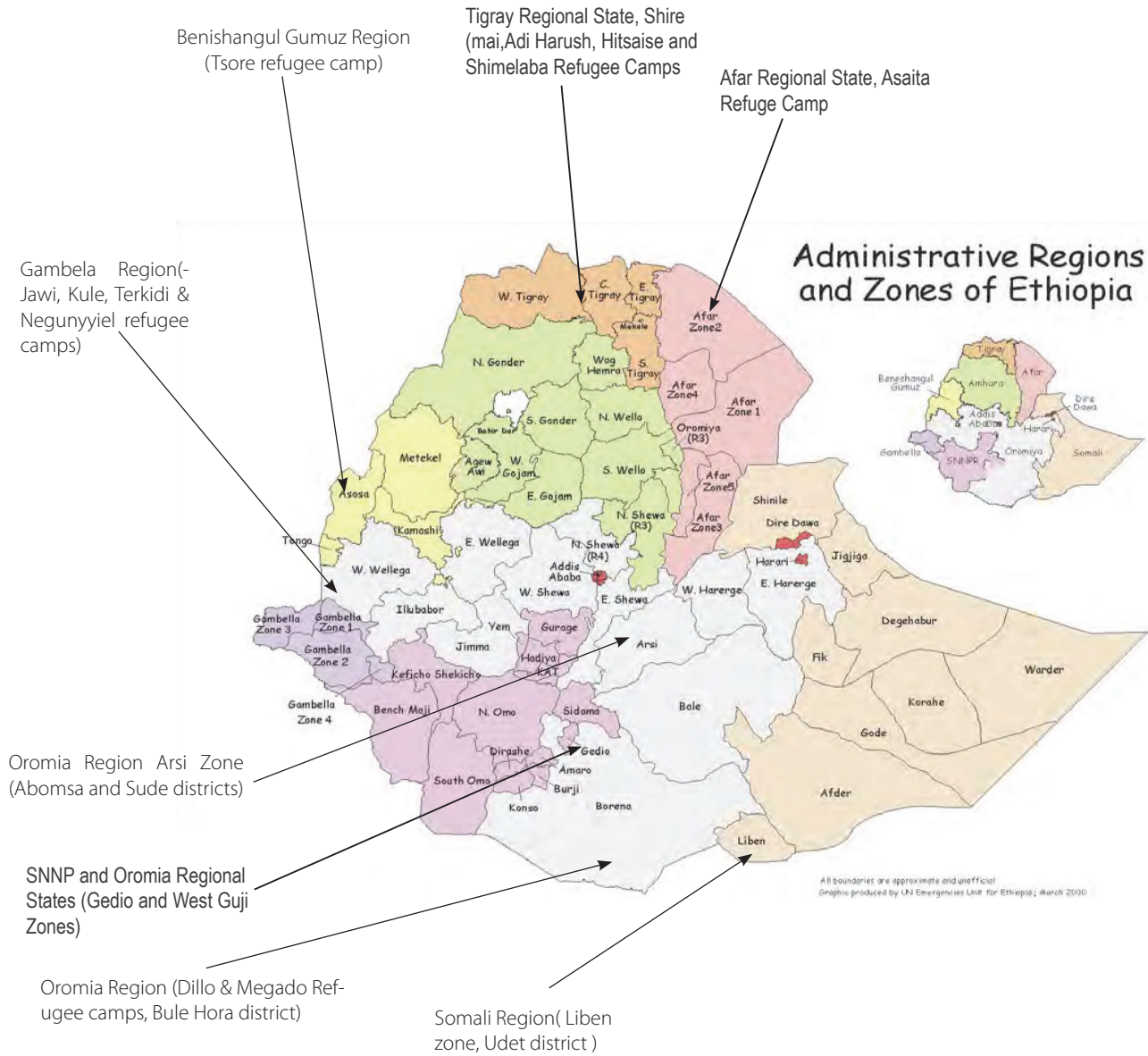
Both organizations have similar vision and mission even though they have different and unique identity in that, ROBA is established owned and being led by the grass roots communities, while, ANE had been established at the national level and rapidly grew in short time and currently implementing programs of larger scale, especially in refugee sector. ROBA is at the moment at the weakest development level of its past 22 years and

seriously in need of urgent support to continue to function, while, ANE is currently in a strong and well strengthened development level of its past eight years and currently implementing large scale programs and gained trust and acceptance by all concerned, both locally and internationally.

ROBA got the opportunity to communicate & discuss on its organizational situation with ANE. As a result, ROBA got the urgently needed support in the form of cash, kind, willingness knowledge and experience in the reporting period, as result ROBA provided Food and Nonfood items for more than 188 IDPs temporarily settled in Kofele town of West Arsi Zone. ANE, even though it has been young and emerging in the humanitarian sector, showed and provided the required support to ROBA for urgent and sustainable development that ROBA needed at the moment. In order to share their unique experiences and mutual benefits in the process of their operations, both organizations reached an agreement to cooperate and collaborate for the coming five years.

Beside of this, ANE provided Nonfood items for 1000 Hawasa IDPs in August 2018 and ANE also provided support (bags, exercise books and pens) for 100 orphan students through Muday organization in the reporting period.

Country Map & ANE's Operational Areas



reaching
Serving
most Vulnerable



ANE | ACTION FOR
THE NEEDY IN
ETHIOPIA
HUMANITARIAN ORGANIZATION

Tel: +251 113 691740 / +251 118 294244
P.O. Box:9151 Addis Ababa, Ethiopia
Email: info@ane-ethiopia.org
www.ane-ethiopia.org